

ZACKE
SINCE 1968



Exclusive Private Sale
58 Archaic Chinese Jades
from Private Collections

ORDER FORM
Private Sale: **Archaic Jades**
PSJAD0623

LOT	LOT TITLE	SELLING PRICE IN EURO

TERMS OF PAYMENT, SHIPPING AND COLLECTION:

NAME

EMAIL

ADRESS

CITY, COUNTRY

POSTCODE

PHONE NUMBER

DATE & SIGNATURE

☐ CREDIT CARD PAYMENT
PLEASE CHECK THE DESIRED CARD

☐ COLLECTION BY CLIENT
WITH PAYMENT ON THE PREMISES
IN CASH, BY CERTIFIED CHEQUE OR CREDIT CARD

☐ INVOICE PAYMENT
VIA BANK WIRE AFTER RECEIPT OF INVOICE
SHIPPING AFTER RECEIPT OF PAYMENT

☐ EXPRESS PARCEL SERVICE
REQUIRED (ACCORDING TO TERMS
AND CONDITIONS OF GALERIE ZACKE)

☐ SHIPPING INSURANCE
REQUIRED (ACCORDING TO TERMS
AND CONDITIONS OF GALERIE ZACKE)

☐ AMEX☐ MASTERCARD☐ VISA

NAME

ADDRESS

CARD NUMBER

EXPIRY DATESECURITY CODE

GALERIE ZACKE
Sterngasse 13, 1010 Vienna, Austria
Email: office@zacke.at
Tel: +43-1-532 04 52
Fax: +43-1-532 04 52 20

IMPORTANT NOTICE:
At its sales, Galerie Zacke sells consigned lots on behalf of third-party consignors. For this reason, any complaints related to purchased lots must be reported to Galerie Zacke within 6 weeks after the receipt of such lot.

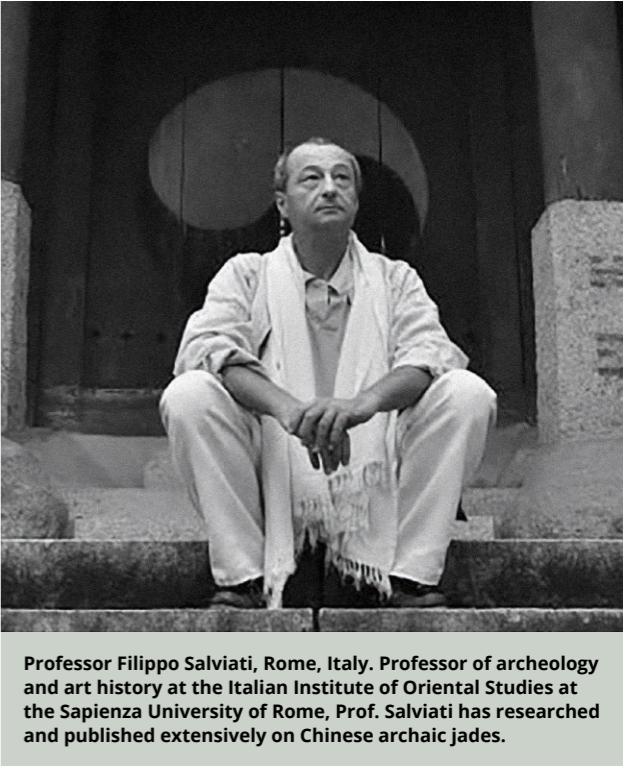
All sales are according to the general terms and conditions of business of Galerie Zacke Vienna, Founded 1968, SZA Versteigerungen & Vertriebs GmbH, 1010 Wien, online at www.zacke.at

Archaic Jades from
Private Collections
Private Sale

We are delighted to present a prestigious private sale with a selection of 58 archaic Chinese jades, in collaboration with renowned expert Prof. Filippo Salviati.

Each jade in this remarkable selection has been sourced from private collections and captures the essence of ancient China, showcasing the exquisite craftsmanship and enduring beauty of archaic Chinese jades. We take pride in presenting this exclusive offering, as **none of these jades have been made available by us before.** To guarantee their authenticity and value, every jade has undergone a comprehensive examination personally conducted by Prof. Filippo Salviati, a distinguished authority in the field. As this was not possible during the recent pandemic, Prof. Salviati in Spring 2023 made a special trip to Vienna to assess each jade that has been consigned to us over the past three years. We extend this invitation exclusively to our most valued jade buyers, allowing them the privilege of being the first to explore and acquire these remarkable artifacts.

These artifacts, each with its own unique narrative and cultural value, represent a remarkable testament to the passage of time.



Professor Filippo Salviati, Rome, Italy. Professor of archeology and art history at the Italian Institute of Oriental Studies at the Sapienza University of Rome, Prof. Salviati has researched and published extensively on Chinese archaic jades.

We hope you enjoy embarking on this journey in exploring the various archaic cultures and look forward to your requests.

Best wishes,

Susanne Zacke and Team



No. 2: A MOTTLED SPINACH GREEN HOOF-SHAPED JADE ORNAMENT, HONGSHAN



No. 12: A LARGE GREEN AND BROWN CEREMONIAL JADE BLADE, QIJIA CULTURE

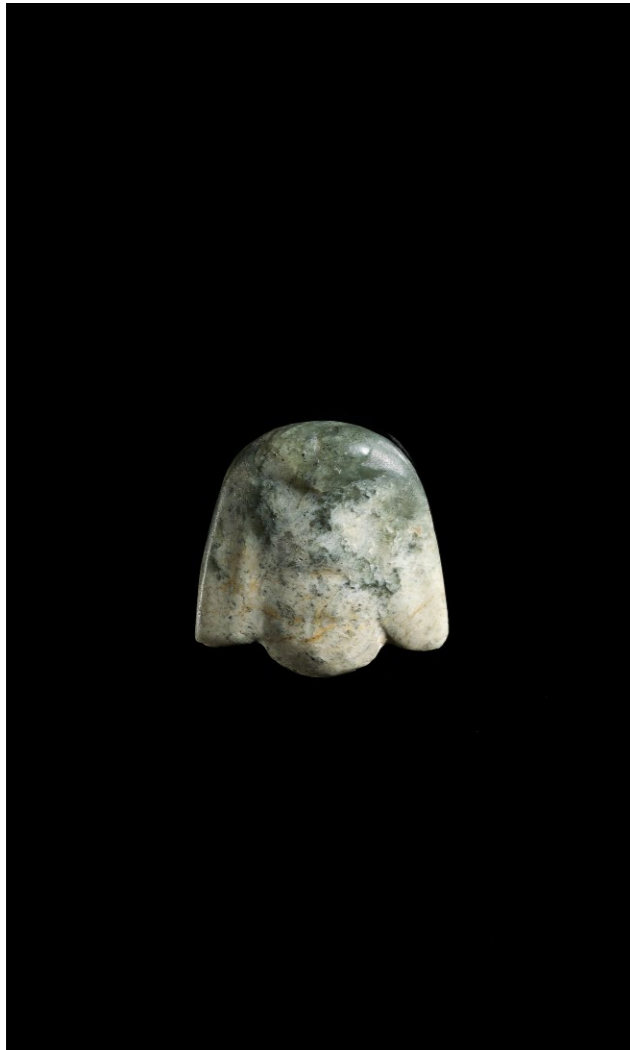


No. 41: A SUPERB RUSSET JADE DRAGON-FORM PENDANT, EASTERN ZHOU



No. 54: AN IMPORTANT AND LARGE WHITE AND RUSSET JADE 'DOUBLE DRAGON' BELT HOOK, WESTERN HAN

All Jades in this private sale have been carefully inspected and authenticated by Prof. Filippo Salviati



1 | **A MOTTLED GREEN AND WHITE 'BIRD' PENDANT, HONGSHAN CULTURE**

China, Hongshan culture, c. 3500-3000 BC

Of flattened form, carved in the shape of a bird with indicated bulging eyes, a beak, and splayed wings, all softened over time, making them very smooth and barely visible. The reverse pierced with an aperture for suspension. The opaque jade of green tone with large areas of white and ochre inclusions.

Condition: Good condition commensurate with age, with wear, weathering, and small natural fissures.
Provenance: Italian private collection.

Weight: 10 g
Dimensions: Height 3.2 cm

LITERATURE COMPARISON
Compare to closely related bird pendants in 4000 Years of Chinese Archaic Jades, by Prof. Filippo Salviati, No.3, pages 4-5 and Nos. 34, 35, 36, pages 32-33.



Purchase for EUR 1,950

2 | **A MOTTLED SPINACH GREEN HOOF-SHAPED JADE ORNAMENT, HONGSHAN**

China, Hongshan culture, c. 4700-2900 BC


With tapered sides widening to a sloped upper edge, the interior of the broader side subtly detailed with linear ridges and grooves, the narrower end pierced with two holes. The semitranslucent stone of a mottled black and spinach green color.

Condition: Good condition with expected wear, the stone with natural fissures, few chips, and nicks.
Provenance: German private collection.

Weight: 361 g
Dimensions: Height 14.7 cm

Large jade ornaments of this specific form are classic testimonies of the Hongshan culture, examples have been recovered at the Niuheiliang burial site in Liaoning province. While generally referred to as headpieces, Jenny F. So has recently suggested that they may have been worn on the forearm to protect the arm and wrist (Jenny F. So, Early Chinese Jades in the Harvard Art Museums, Cambridge, 2019, page 74). She cites an example worn on the forearm of the occupant of Site III at Niuheiliang, and another recovered from the Bronze Age burial site at Dadianzi, in present-day inner Mongolia.

LITERATURE COMPARISON
For a related jade hoof-shaped ornament showing similar grooves and of comparable color, see 4000 Years of Chinese Archaic Jades, by Filippo Salviati, pages 8-9, no. 5.



Purchase for EUR 7,800



3 | **AN IMPORTANT AND LARGE
CELADON JADE C-SHAPED DRAGON PENDANT,
HONGSHAN CULTURE**

China, Hongshan culture, Neolithic period, c. 4710 - 2920 BC

Of typical 'C' shape with an arched body extending to a pointed tip at the tail, its head detailed with bulging eyes, upturned snout, and an undulating crest. A suspension hole is pierced from both sides of the body. The stone is translucent and of a bright celadon hue with milky, darker, and russet inclusions. The surface is perfectly polished.

Condition: Excellent condition with some minor signs of age-related weathering and natural inclusions as well as nibbles.
Provenance: Private collection of Prof. Filippo Salviati.

Weight: 151 g
Dimensions: Height 14 cm

LITERATURE COMPARISON
Compare to a closely related dragon pendant in The complete Collection of Treasures of the Palace Museum, 1995, Hong Kong, pages 10-11.



AUCTION COMPARISON
Type: Related
Auction: Sotheby's, Arts d'Asie, Property from the Bei Zhou collection, 10th of June 2021, Lot 86.
Price: 277,200 EUR
Description: An important celadon jade 'C-shaped' dragon pendant Neolithic period, Hongshan culture.



Purchase for EUR 36,400



4 | **A FINE NECKLACE
WITH NEOLITHIC JADE
AND CARNELIAN BEADS**

China, Hongshan, Liangzhu and Eastern Zhou dynasty cultures

Comprising eight cong-form beads carved as three-tiered miniature congs dating to the Liangzhu Culture, c. 3300-2200 BC. Each register is finely incised with stylized masks at each of the four corners. The beads are neatly pierced from both sides and the semitranslucent stones are of russet and creamy orange tones with darker and cloudy inclusions.

The necklace further shows eight faceted carnelian beads, dating to the Eastern Zhou Dynasty, 8th-3rd century BC, as well as seven round agate beads and sixteen wood discs of later date.



The central jade pendant originates from the Neolithic Hongshan culture, c. 3500-2500 BC. Carved as a humanoid face with stylized round eyes, nose and lips, the semitranslucent stone is of a celadon tone with russet areas and dark inclusions.

Condition: Good condition with minor old wear and few tiny nicks here and there. The stones have natural fissures and imperfections.

Provenance: Collection of Stephen Poulin, Toronto. Mr. Poulin is an avid collector of archaic jades for 40 years and a renowned professional in the art conservation industry.

Weight: 222 g (total)
Dimensions: Total length 45 cm (when fastened), length of the cong-form beads c. 4.5 cm each

Purchase for EUR 2,600

5 | **A HUMANOID CELADON
AND RUSSET JADE PLAQUE,
SHIJIAHE CULTURE**

China, Shijiahe culture, c. 2500-2000 BC

The rare plaque with depiction of a finely carved human head showing a fierce expression, with slanted rectangular bulging eyes, furrowed brows, a broad nose, and bared teeth, surmounted by an elaborate crown in the form of two deer-like horns richly decorated with double incised lines. The jade is of translucent quality and celadon color with ochre and russet inclusions. The surface is neatly polished.

Condition: Excellent condition with some minor signs of age-related weathering, and natural inclusions and alterations.
Provenance: Private collection of Prof. Filippo Salviati.

Weight: 36 g
Dimensions: 6.3 cm

Literature comparison: A number of similar examples excavated in 1955 and 1981 at Shijiahe culture sites are illustrated in Du Jinpeng, 'Shijiahe yudiao shenxiang qianshuo', Jiangnan kaogu [Jiangnan Archaeology], 1993 March, pp. 51-59; another similar example, with a bird-form crown, unearthed in 2006 from the tomb of Marquis Jin in Yangshe village, Quwo county, is illustrated in Wang Qing, 'Shilun zaoqi Zhongguo jizhong zhuangshi shenling xingxiang de zuoheshi yuqi', Cultural Relics of Central China, 2018 April, p. 52. The cited articles discuss and compare these human mask jades from different archaeological sites in the Neolithic period in detail, and include an example from the British Museum, which is illustrated in Jessica Rawson, Chinese Jade from the Neolithic to the Qing, London, 1995, p. 37.

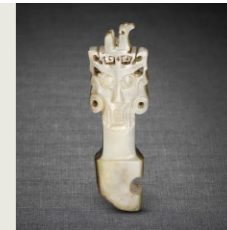
AUCTION COMPARISON

Type: Related

Auction: Christie's Hong Kong, Chinese Archaic Jades from the Yanngdetang Collection Part II, 28 November 2018, lot 2712

Price: HKD 1,000,000

Description: An important and very rare white jade mask-form handle



Purchase for EUR 7,800





6 | AN EMERALD-GREEN THREE NOTCHED JADE YABI DISC, QIJIA CULTURE

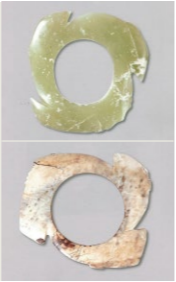
China, early Bronze Age, Qijia culture, c. 2200-1600 BC

The disc has of a thick body with three pointed protrusions jutting out from the border, and a wide, circular central aperture. It is carved from a deep-green, translucent jade. The well-polished surface is plain and bears no carved decoration, which is typical for Qijia culture jades. Although traces of natural weathering are visible, the surface is perfectly smooth to the touch.

Condition: Very good condition with some signs of natural weathering, and natural fissures.
Provenance: The collection of The Zelnik István Southeast Asian Gold Museum. Institutional art collection in Belgium, acquired from the above. Dr. István Zelnik, President of the Hungarian South and Southeast Asian Research Institute, is a former high-ranking Hungarian diplomat who spent several decades in Southeast Asia, building the largest known private collection of Asian art in Europe.

Weight: 79 g
Dimensions: Diameter 9.5 cm

LITERATURE COMPARISON
Compare to closely related notched Bronze Age Yabi discs, yet Dawenkou and Longshan Cultures, in 4000 Years of Chinese Archaic Jades, by Prof. Filippo Salviati, Nos. 95, 96, pages 84-85. For a further disscusssion of Yabi discs excavated in China, please see Luan, „Yabi yanjiu (Researches on Yabi)“, Wenwu, 2005, No.7, pages: 69-81.



Purchase for EUR 3,250



7 | A MOTTLED CELADON JADE BI DISC, QIJIA CULTURE

China, early Bronze Age, Qijia culture, c. 2200-1600 BC

The disc of circular form with a large, tubular aperture gets thinner toward one side. The stone is translucent and of a beautiful celadon tone, with cloudy inclusions and mottled with darker spots.

Condition: Very good condition with some natural fissures and signs of weathering.
Provenance: The collection of The Zelnik István Southeast Asian Gold Museum. Institutional art collection in Belgium, acquired from the above. Dr. István Zelnik, President of the Hungarian South and Southeast Asian Research Institute, is a former high-ranking Hungarian diplomat who spent several decades in Southeast Asia, building the largest known private collection of Asian art in Europe.

Weight: 116 g
Dimensions: Diameter 11.4 cm

LITERATURE COMPARISON
Compare to closely related Bronze Age jade BI discs in 4000 Years of Chinese Archaic Jades, by Prof. Filippo Salviati, Nos. 115, 116, 117, 118, 119, pages: 98-101.

AUCTION COMPARISON
Type: Related
Price: Sold at 187,500 HKD, approx. **22,000 EUR**
Auction: Christie's, Chinese Archaic Jades from The Yangdetang Collection Part II, lot 2710, 28th of November 2018
Description: A Celadon Jade Disc, BI

Purchase for EUR 2,600



8 | **A CELADON AND
RUSSET QI JADE BLADE,
QIJIA CULTURE**

China, early Bronze Age, Qijia culture,
c. 2200-1600 BC

A fine arched blade, with straight cutting edge and a triangularly tapered, narrow handle with one pierced hole. The sides are embellished with four symmetrical notches. The surface is neatly polished and almost lustrous. The celadon hue of the jade is enriched by russet and dark brown inclusions, as well as near black- and ivory-colored areas along the border of the cutting edge.

Condition: Very good condition with expected traces of weathering, and tiny notches.
Provenance: The collection of The Zelnik István Southeast Asian Gold Museum. Institutional art collection in Belgium, acquired from the above. Dr. István Zelnik, President of the Hungarian South and Southeast Asian Research Institute, is a former high-ranking Hungarian diplomat who spent several decades in Southeast Asia, building the largest known private collection of Asian art in Europe.

Weight: 137 g
Dimensions: Length 21.5 cm

**LITERATURE
COMPARISON**
Compare to
closely related
Bronze Age
QI blades in
4000 Years
of Chinese
Archaic Jades,
by Prof. Filippo
Salvati, Nos.
140, 141,
pages: 122-123



Purchase for EUR 2,600

9 | **A LONG 'RIVER JADE' BLADE,
QIJIA CULTURE**

China, early Bronze Age, Qijia culture,
c. 2200-1600 BC

An elegant blade of remarkable size, skillfully worked from an opaque and mottled hardstone, incorporating various hues of green and light russet, reminiscent of a river stream. The blade is faintly thinning towards the sides, the cutting edge is slightly convex. The top section of the jade is pierced with one hole. The surface is exquisitely polished and smooth to the touch.

Condition: Excellent condition with expected wear and natural fissures.
Provenance: The collection of The Zelnik István Southeast Asian Gold Museum. Institutional art collection in Belgium, acquired from the above. Dr. István Zelnik, President of the Hungarian South and Southeast Asian Research Institute, is a former high-ranking Hungarian diplomat who spent several decades in Southeast Asia, building the largest known private collection of Asian art in Europe.

Weight: 175 g
Dimensions: Length 29 cm

**LITERATURE
COMPARISON**
Compare to
closely related
blades in
4000 Years
of Chinese
Archaic Jades,
by Prof. Filippo
Salvati, Nos.
132, 133
pages: 112-113

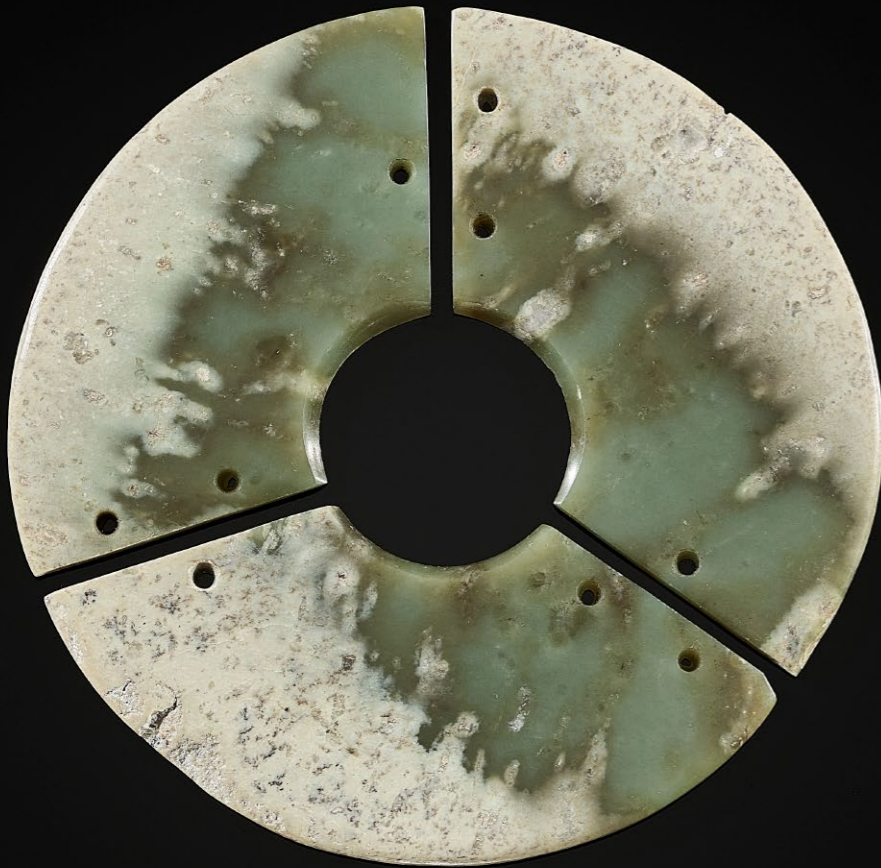


AUCTION COMPARISON
Type: Related
Price: 187,500 HKG,
approx. **22,000 EUR**
Auction: Christie's, The
Chang Wei-Hwa collection
of Archaic Jades Part I –
Neolithic Period, Lot 2741,
29th of November 2023
Description: A dark green
stone blade, Neolithic
Period, circa 2500-2000 BC



Purchase for EUR 4,550





10 | A SEA-GREEN THREE SECTION JADE BI DISC, QIJIA CULTURE

China, early Bronze Age, Qijia culture, c. 2200-1600 BC

All three flat arc-shaped sections are carved from the same piece of semi-translucent, sea-green jade varied by large, milky-white and brownish inclusions. Each section is fashioned with rounded edges and conical holes pierced at each end for the three parts to be attached to each other. The surface is carefully polished and smooth to the touch.

Condition: Good condition with some material loss to the outer edges, and small chips.

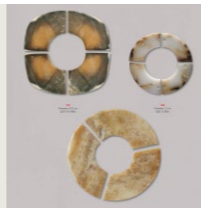
Provenance: The collection of The Zelnik István Southeast Asian Gold Museum. Institutional art collection in Belgium, acquired from the above. Dr. István Zelnik, President of the Hungarian South and Southeast Asian Research Institute, is a former high-ranking Hungarian diplomat who spent several decades in Southeast Asia, building the largest known private collection of Asian art in Europe.

Weight: 231 g

Dimensions: Diameter 15.7 cm

LITERATURE COMPARISON

Compare to closely related three-section jade discs in 4000 Years of Chinese Archaic Jades, by Prof. Filippo Salviati, Nos. 121, 122, 123, pages: 102-103.



AUCTION COMPARISON

Type: Related
Price: Sold at 75,000 HKD, approx. **9,000 EUR**
Auction: Christie's, Chinese Archaic Jades from The Yangdetang Collection, lot 2711, 29th of November 2017
Description: A White Jade „Triple Huang“ Bi Disc, Qijia culture, circa 2300-1500 BC



Purchase for EUR 2,600



11 | A LARGE ARCHAIC GREEN JADE AXE BLADE, DAO, QIJIA CULTURE

China, early Bronze Age, Qijia culture, c. 2200-1600 BC

Of trapezoidal form with a straight upper edge and beveled lower edge, pierced with three apertures along the upper edge. The translucent stone of a sea-green tone with grayish-white and dark green shadings.

According to the Cleveland Museum of Art, recent recoveries of similar blades from a pit of a Qijia cultural site located in northwest China reveal that they were originally standing on their edges and were arranged in parallel formations at the ritual ground.

With a velvet fitted silk storage box.

Condition: Good age-related condition with ancient wear as well as chips and nibbles, the stone with natural fissures and imperfections.

Provenance: From a Canadian private collection.

Weight: 534 g

Dimensions: Length 31 cm

Expert's note: Jessica Rawson in Chinese Jade from the Neolithic to the Qing, British Museum, 1995, p. 184, discusses jade ceremonial blades and how they evolved from stone reaping implements.

AUCTION COMPARISON

Type: Related
Auction: Bonhams London, Fine Chinese Art on 18 May 2023, lot 4
Price: **GBP 17,850**
Description: A very large archaic jade axe blade, Dao, Neolithic Period
Expert remark: Compare the related form and subject.



Purchase for EUR 2,600



12 | **A LARGE GREEN AND BROWN CEREMONIAL JADE BLADE, QIJIA CULTURE**

China, early Bronze Age, Qijia culture, c. 2200-1600 BC

An amazing example of a long ceremonial blade, trapezoidal in shape, with slightly slanting short sides, faintly arched at the top edge, and with a straight cutting edge. The top pierced with three holes. The softly polished stone of an amazing, translucent blueish green tone and with large areas of darker, semi-translucent brown inclusions to the top and sides.

According to the Cleveland Museum of Art, recent recoveries of similar blades from a pit of a Qijia cultural site located in northwest China reveal that they were originally standing on their edges and were arranged in parallel formations at the ritual ground.

Condition: Very good condition with age-related wear, and tiny chips.
Provenance: The collection of The Zelnik István Southeast Asian Gold Museum. Institutional art collection in Belgium, acquired from the above. Dr. István Zelnik, President of the Hungarian South and Southeast Asian Research Institute, is a former high-ranking Hungarian diplomat who spent several decades in Southeast Asia, building the largest known private collection of Asian art in Europe.

Weight: 612 g
Dimensions: Length 39 cm

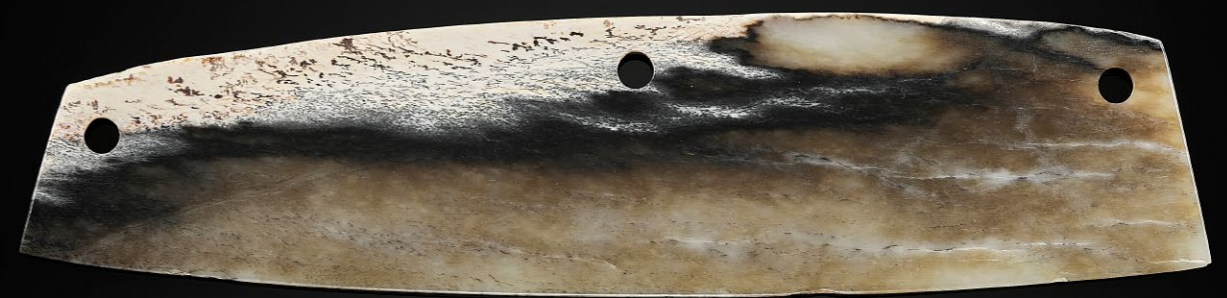
Literature comparison: Compare to closely related blades in 4000 Years of Chinese Archaic Jades, by Prof. Filippo Salviati, Nos. 134, 135, 136, pages: 114-117. Compare to a closely related Ceremonial Blade with Three Perforations (Dao), 2000-1700 BC, Northwest China, late Neolithic period to early Bronze Age, Qijia culture exhibited at Cleveland Museum of Art, Severeance and Greta Milikin Collection 2009.83.

AUCTION COMPARISON

Type: Related
Price: Sold at 30,000 GBP approx. **35,000 EUR**
Auction: Christie's, A Private English collection of White Jade Carvings and Fine Chinese Ceramics and Works of Art including Export Art, Lot 118, 4th of November 2008
Description: A greyish-green jade blade, Dao, Neolithic period, Qijia culture, circa 2050-1700 BC



Purchase for EUR 9,100



13 | **A FINE MOTTLED JADE DAO BLADE, QIJIA CULTURE**

China, early Bronze Age, Qijia culture, c. 2200-1600 BC

A fine ceremonial blade, trapezoidal in shape, with slightly slanting short sides, faintly arched top edge, and curved cutting edge. The top pierced with three holes. The softly polished semi-translucent stone showing an intense color play of white, ochre, brown and black hues and whitish alterations.

According to the Cleveland Museum of Art, recent recoveries of similar blades from a pit of a Qijia cultural site located in northwest China reveal that they were originally standing on their edges and were arranged in parallel formations at the ritual ground.

Condition: Very good condition with age-related wear, calcification, and small chips.
Provenance: The collection of The Zelnik István Southeast Asian Gold Museum. Institutional art collection in Belgium, acquired from the above. Dr. István Zelnik, President of the Hungarian South and Southeast Asian Research Institute, is a former high-ranking Hungarian diplomat who spent several decades in Southeast Asia, building the largest known private collection of Asian art in Europe.

Weight: 331 g
Dimensions: Length 31 cm

LITERATURE COMPARISON
Compare to closely related DAO blades in 4000 Years of Chinese Archaic Jades, by Prof. Filippo Salviati, Nos. 134, 135, 136, pages: 114-117.



Purchase for EUR 4,550



14 | **A LARGE AND IMPRESSIVE
MOTTLED CELADON
JADE ZHANG BLADE,
QIJIA CULTURE**

China, early Bronze Age, Qijia culture,
c. 2200-1600 BC

Striking in its form, this long ZHANG blade boasts a curved cutting edge, thus creating a double-pointed form. The asymmetrical, inner curvature is typical for long ceremonial ZHANG blades. Two neatly carved flanges flank the tang pierced with one circular hole. A strong, perfectly straight line runs along the blade. The semi-translucent jade is of a celadon hue with cloudy inclusions of brownish colors, green spots, and darker veins.

Condition: Very good condition with natural inclusions, calcification, and fissures. A small chip to the pointy edge of the blade.

Provenance: The collection of The Zelnik István Southeast Asian Gold Museum. Institutional art collection in Belgium, acquired from the above. Dr. István Zelnik, President of the Hungarian South and Southeast Asian Research Institute, is a former high-ranking Hungarian diplomat who spent several decades in Southeast Asia, building the largest known private collection of Asian art in Europe.

Weight: 189 g
Dimensions: Length 29 cm

**LITERATURE
COMPARISON**

Compare to closely related ZHANG blades in 4000 Years of Chinese Archaic Jades, by Prof. Filippo Salviati, Nos. 137, 138, 139, pages: 118-121



AUCTION COMPARISON

Type: Related
Price: 32,500 USD approx.
30,000 EUR
Auction: Christie's, Fine Chinese Art from the Arthur M. Sackler Collections, 18th of March 2009, Lot 289.
Description: A blackish-green jade ceremonial blade, Zhang, Northwest China, Qijia culture, circa 1500 BC



Purchase for EUR 5,200



15 | **A RARE GREEN AND BROWN JADE AXE,
QIJIA CULTURE**

China, early Bronze Age, Qijia culture, c. 2200-1600 BC

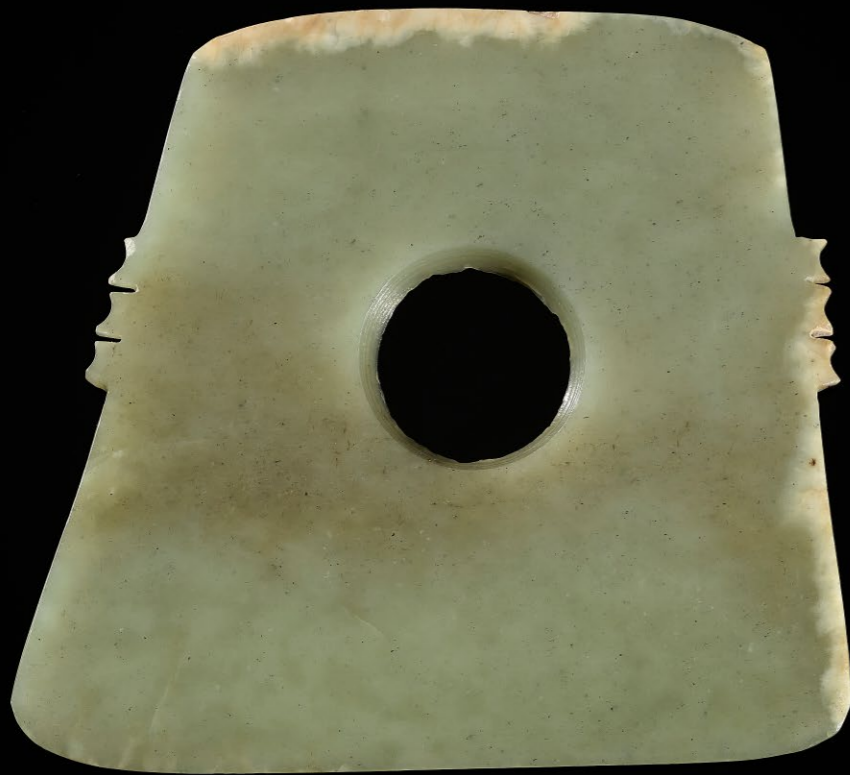
A rare, bell shape; nicely polished blade, broadening toward the cutting edge and tapering towards the pierced handle with a hafting hole to the upper section. The stone of a deep green tone with extensive, darker veining, inclusions, and cloudy white speckles.

Condition: Good condition with expected wear, weathering, as well as small chips and nibbles which have smoothened over time. Natural inclusions, and fissures.

Provenance: The collection of The Zelnik István Southeast Asian Gold Museum. Institutional art collection in Belgium, acquired from the above. Dr. István Zelnik, President of the Hungarian South and Southeast Asian Research Institute, is a former high-ranking Hungarian diplomat who spent several decades in Southeast Asia, building the largest known private collection of Asian art in Europe.

Weight: 118 g
Dimensions: Height 13.5 cm

Purchase for EUR 3,900



16 | **A CELADON JADE NOTCHED YUE AXE, QIJIA CULTURE**

China, early Bronze Age, Qijia culture, c. 2200-1600 BC

Of tapering form with a wide and straight cutting edge, well-carved from a beautiful, translucent celadon stone with delicate, brownish, and milky white inclusions, as well as with miniature, spinach-green spots. A large, circular hole is pierced in the center and the sides are embellished with notches. The well-polished surface is perfectly smooth. Some areas of the edges calcified showing a milky beige hue.

Condition: Very good condition with small notches to the edges and central hole, natural fissures.
Provenance: The collection of The Zelnik István Southeast Asian Gold Museum. Institutional art collection in Belgium, acquired from the above. Dr. István Zelnik, President of the Hungarian South and Southeast Asian Research Institute, is a former high-ranking Hungarian diplomat who spent several decades in Southeast Asia, building the largest known private collection of Asian art in Europe.

Weight: 142 g
Dimensions: Height 10.1 cm, Length 11.5 cm

LITERATURE COMPARISON
 Compare to a closely related notched Bronze Age Yue axe, yet Erlitou to Shang, in 4000 Years of Chinese Archaic Jades, by Prof. Filippo Salviati, No. 143, pages 124-125.



Purchase for EUR 2,600



17 | **A SUPERB PALE CELADON JADE NOTCHED AXE, QI, SHANG DYNASTY**

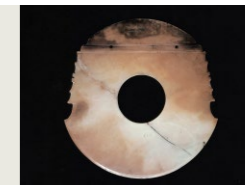
China, Shang Dynasty, c. 2070-1600 BC

This Qi jade axe exhibits impressive elegance and meticulous craftsmanship quality. It features a wide and gracefully curved cutting edge that tapers towards the tip, with a large circular hole at the center. The sides of the axe are adorned with five symmetrical notches. Above the central hole, two parallel, straight grooved lines run horizontally. The surface of the axe is exceptionally well-polished. The jade itself displays a beautiful pale celadon hue, complemented by subtle darker and russet shadings.

Condition: Very good condition with some minor signs of age-related weathering, tiny notches, and natural inclusions and fissures.
Provenance: Private collection of Prof. Filippo Salviati.

Weight: 49 g
Dimensions: Height 8.2 cm

LITERATURE COMPARISON
 Compare to a closely related notched Qi axe in The complete collection of Jades unearthed in China, Gu Gang, Vol 5, Beijing, 2005, page 84.



AUCTION COMPARISON
Type: Related
Auction: Sotheby's, The Victors Shaw Collection of Chinese Jades: Online Part 2, 31st May 2023, Lot 3005.
Price: 444,500 HKD, approx. **52,000 EUR**
Description: An archaic calcified jade notched axe, Qi, Shang Dynasty.



Purchase for EUR 7,150



18 | A CELADON AND RUSSET JADE WATER BUFFALO, LATE SHANG DYNASTY

China, late Shang dynasty (1600 -1045 BC)

One of the innovations of Shang jade carving was the creation of figures in the round. This recumbent beast is skillfully carved from a near opaque, pale celadon stone with russet and white inclusions. The shape is very compact, and the figurine fits perfectly in the hand. The ornamentation is geometric in form and highly characteristic of the Shang Dynasty. The back is pierced for suspension.

Condition: Very good condition with expected traces of weathering and wear as well as natural inclusions and calcification to the stone.
Provenance: Canadian private collection.

Weight: 64 g
Dimensions: Length 6 cm

LITERATURE COMPARISON

Please compare to a closely related jade Water Buffalo, Shang Dynasty, 13th-11th century BCE, exhibited at:
 London. Victoria and Albert Museum. "Chinese Jades Throughout the Ages," May 1, 1975–June 30, 1975.
 New York. The Metropolitan Museum of Art. "Arts of Ancient China," 2005.
 New York. The Metropolitan Museum of Art. "Celebrating the Year of the Ox," January 30, 2021–January 23, 2022.



Purchase for EUR 5,850



19 | A PALE CELADON AND BROWN 'BIRD' ORNAMENT, WESTERN ZHOU

China, early Western Zhou dynasty, c. 1200-1000 BC

A thick and heavy ornament of tapering shape, richly incised with double-line grooves, depicting a stylized bird in profile. One side asymmetrically decorated with ten carefully carved notches. The jade is translucent with appealing brown and pale celadon hues.

Condition: Good condition commensurate with age, with wear, weathering, and small natural fissures.
Provenance: Italian private collection.

Weight: 31 g
Dimensions: Height 7 cm

LITERATURE COMPARISON

Compare to a closely related notched bird ornament in 4000 Years of Chinese Archaic Jades, by Prof. Filippo Salviati, No. 175, pages 152-153.



Purchase for EUR 4,550



20 | **A WHITE AND RUSSET JADE ZOOMORPHIC PENDANT, WESTERN ZHOU**

China, Western Zhou dynasty, 1100-771 BC

The pendant is richly ornamented with incised double lines creating geometrical decoration of scrolls and spirals. In appearance a stylized depiction of a bird-like mythical animal. Notches and scrolled appendages are neatly carved on the sides. One tiny hole pierced at the upper part. The translucent jade with some calcification, and of an appealing tinted white hue with russet inclusions.

Condition: Excellent condition with some minor signs of age-related weathering, and natural inclusions, calcification, and alterations.
Provenance: Private collection of Prof. Filippo Salviati.

Weight: 44 g
Dimensions: Height 9 cm

Purchase for EUR 7,800

21 | **A RARE PALE CELADON JADE PENDANT OF A BEAR, WESTERN ZHOU**

China, Western Zhou dynasty, 1100-771 BC

A rare pendant depicting a bear in profile. The animal is seated in a humanoid manner, with its knees raised and its paws resting atop. The snout is slightly lifted upwards. The body is richly ornamented with incised double lines, creating geometrical decoration of scrolls and spirals, carved to both sides. One tiny hole pierced at the upper part, on the back of the animal's neck. The translucent jade of a creamy pale celadon hue with some cloudy and russet inclusions.

Condition: Very good condition with some minor signs of age-related weathering, tiny notches, and natural alterations.
Provenance: Private collection of Prof. Filippo Salviati

Weight: 61 g
Dimensions: Height 8.5 cm

Purchase for EUR 7,800





22 | **A GREY JADE ‘BIRD’ PENDANT, WESTERN ZHOU DYNASTY**

China, Late Western Zhou dynasty, c. 11th – 9th century BC

The jade is decorated in low relief with geometrical decoration of stylized scrolls, eyes, comma spirals and parallel lines to both sides. Two tiny holes pierced at the upper part and on the side. The translucent jade with extensive signs of natural weathering and of an appealing, pale grey color with some milky patches and delicate, darker inclusions.

Condition: Very good condition with extensive weathering, tiny notches and wear as well as natural inclusions and fissures to the stone.
Provenance: Canadian private collection.

Weight: 12 g
Dimensions: Height 5.3 cm

Purchase for EUR 5,200

23 | **A GREEN, BROWN, AND WHITE ‘BIRD’ ORNAMENT, WESTERN ZHOU**

China, Western Zhou dynasty, c. 1050-771 BC

The bird is depicted in profile, in a rather naturalistic manner. Both sides are adorned with geometric patterns executed in double-incised lines. The surface is well polished and lustrous which emphasizes the ornamentation. The jade of a beautiful, green tone with dark-brown and whitish inclusions respectively alterations to one side.

Condition: Very good condition commensurate with age, with wear, alterations, weathering, and small natural fissures.
Provenance: Italian private collection.

Weight: 11 g
Dimensions: Height 3.7 cm

Purchase for EUR 5,200



24 | **A CELADON AND RUSSET JADE ‘STAG’ PENDANT, WESTERN ZHOU**

China, Western Zhou dynasty, 1100-1000 BC

Carved as the silhouette of a stag with its head turned, the surface of the translucent stone is plain, polished, and of a variegated celadon and russet tone. Pierced to the neck allowing for suspension as a pendant.

Condition: Very good condition with minor wear and minimal smoothened nibbling.
Provenance: Swedish private collection, acquired in Stockholm in 2005.

Weight: 10 g
Dimensions: Height 5.5 cm

The stag is an animal which was occasionally represented in jade during the Western Zhou period, following contacts with the steppe nomads of the North from whom the imagery derived. However, compared to their nomadic prototypes, the Chinese jade stags have sturdier bodies and more exuberant horns. In Western Zhou graves, jade figurines of stags with magnificent horns have mostly been found in the tombs of women.

LITERATURE COMPARISON
A similar example was unearthed in 1974 from a Western Zhou tomb at Rujiazhuang, Baoji, Shaanxi, see Rawson 2013, p.59 and note 87. A related example is in the British Museum, registration number 1945,1017.13. Another stag pendant in the shape of a deer is in 4000 Years of Chinese Archaistic Jades, by Filippo Salviati, page 150, number 173.



Purchase for EUR 5,200



25 | **A FINE CELADON AND RUSSET JADE BEAD, EASTERN ZHOU**

China, Eastern Zhou dynasty, 5th-3rd century BC

A rare, small trapezoidal jade bead with round edges and richly decorated pattern of fat comma spirals carved in relief. The surface is highly polished, which emphasizes and highlights the skillfully rendered ornamentation. Large central drilling showing ancient toolmarks. The semi-translucent bead is of an appealing celadon tone with russet and dark brown inclusions and ochre hued alterations.

Condition: Very good condition with expected traces of weathering and wear as well as natural inclusions, and alterations to the stone.
Provenance: Canadian private collection.

Weight: 21 g
Dimensions: Height 2.7 cm

LITERATURE COMPARISON
Compare to closely related jade beads in 4000 Years of Chinese Archaic Jades, by Prof. Filippo Salviati, Nos. 237, 238, 240, pages 222-223.



Purchase for EUR 3,900



26 | **A FINE YELLOW AND MILKY-WHITE JADE BEAD, EASTERN ZHOU**

China, Eastern Zhou dynasty, c. 5th-3rd century BC

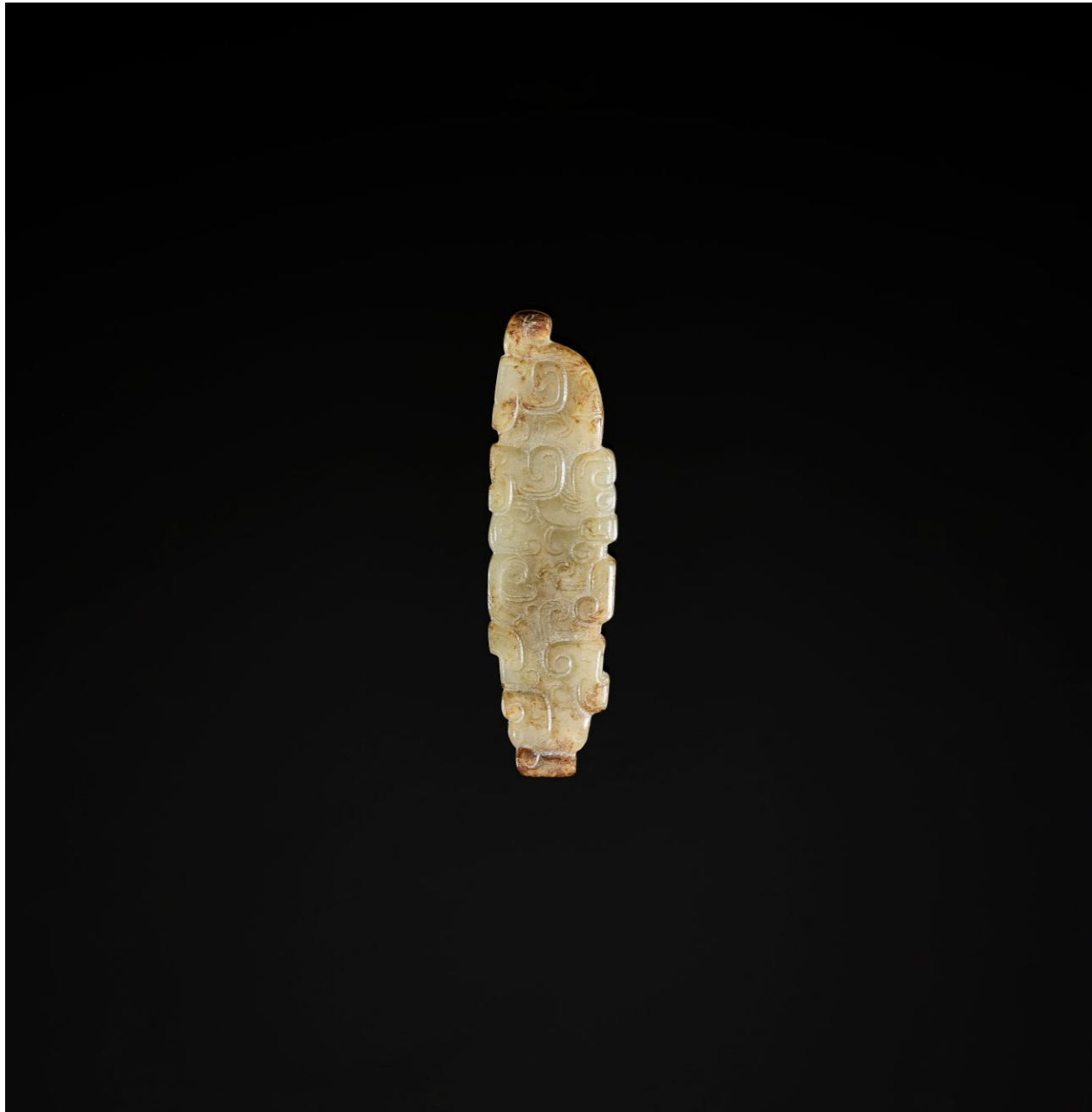
A tubular jade bead with round edges and richly decorated pattern of fat comma spirals carved in relief, divided by two transverse lines with an ornament of incised diagonal grooves inbetween. The surface is finely polished, which highlights the skillfully rendered ornamentation. Large central drilling showing ancient toolmarks. The jade of yellowish hue, varied with milky white and brownish-black inclusions.

Condition: Very good condition with expected traces of weathering and wear as well as natural inclusions and alterations to the stone.
Provenance: Canadian private collection.

Weight: 32 g
Dimensions: Height 4.7 cm

LITERATURE COMPARISON
Compare to closely related jade beads in 4000 Years of Chinese Archaic Jades, by Prof. Filippo Salviati, Nos. 237, 238, 240, pages 222-223.

Purchase for EUR 3,900



27 | **A ZOOMORPHIC WHITE AND RUSSET JADE BEAD,
EASTERN ZHOU**

China, Eastern Zhou dynasty, 5th-3rd century BC

Flat and prolonged bead carved in low relief with curls and spirals depicting stylized crouching tigers with snout-like noses and coiled bifurcated tails. The translucent stone of a beautiful, white tone with russet and milky white inclusions. The grooved ornamentation is detailed and precise, the surface is neatly polished and lustrous. A thin hole pierced horizontally from both sides.

Condition: Very good condition with expected traces of weathering and wear as well as natural inclusions to the stone.
Provenance: Canadian private collection.

Weight: 17 g
Dimensions: Length 7.2 cm

Purchase for EUR 3,250



28 | **A FINE OPENWORK CELADON JADE
'TWO DRAGONS' PENDANT,
SPRING AND AUTUMN**

China, Eastern Zhou dynasty, Spring and Autumn, 6th – 5th century BC

This pendant, slightly trapezoidal in shape, with two downward-facing dragon heads is a little masterpiece. The pendant is adorned on both sides with a relief design consisting of a dense pattern of c-scrolls. The near translucent jade used for this piece exhibits an even celadon hue, with subtle russet and opaque ochre inclusions present along the edges.

Condition: Excellent condition with some minor signs of age-related weathering, and natural inclusions.
Provenance: Private collection of Prof. Filippo Salviati.

Weight: 25 g
Dimensions: Length 7 cm

Purchase for EUR 5,200

29 | **A LARGE WHITE AND RUSSET
JADE 'DRAGON' PENDANT,
EASTERN ZHOU**

China, Eastern Zhou dynasty, 7th – 3rd century BC


The jade carved as a snake-dragon, with circular eyes, a prominent snout, and comma spirals decorated to the s-shaped body that terminates in a coiled tail reminiscent of a phoenix head. The body of the dragon is elegantly curved, the head, tail and scrolled appendages are further enriched with subtly engraved motifs. The semi-translucent jade of a beautiful white hue with grayish inclusions and transitioning into russet shades at the edges.

Condition: Excellent condition with some minor signs of age-related weathering, and natural inclusions and alterations.
Provenance: Private collection of Prof. Filippo Salviati.

Weight: 157 g
Dimensions: Length 19.3 cm

LITERATURE COMPARISON

The closest comparable jade is represented by a similar pendant in the Harvard Art Museums, illustrated in Jenny F. So, *Early Chinese Jades in the Harvard Art Museums*, Cambridge 2019, cat. 25D, where the author states that similar examples have been unearthed at Luoyang, the site of the ancient Eastern Zhou capital (p. 212). Compare also a pair of similar pendants in the collection of Sir Joseph Hotung and illustrated in J. Rawson, *Chinese Jade. From the Neolithic to the Qing*, London 1999, no. 17:9. A final comparative example is offered by a pair of dragon pendants from the Edward and Louise B. Sonnenschein Collection in the Art Institute, Chicago.



Purchase for EUR 32,500



30 | **A PAIR OF 'DRAGON AND PHOENIX' JADE CARVINGS, EASTERN ZHOU**

China, Eastern Zhou dynasty, 4th-3rd century BC

Each ornament of rounded dynamic shape, well-carved and finely detailed based on the design of a dragon whose coiled body terminates in the head of a long-crested phoenix. The dragon is portrayed with a long, curled body that is further embellished with curled and truncated appendages indicating the feet, tail, and short wings, both sides further covered with small, raised curls while the phoenix crest is decorated with parallel lines. The pale green jade is translucent, with extensive grayish-white surface calcification.

With a silk fitted, Qing dynasty wood box, the rectangular cover finely carved in low relief with a ferocious front-facing dragon, its horns emerging from a flame-like mane, the fierce face detailed with flaring nostrils and long wavy whiskers. The scaly body coiling around a flaming pearl and amid dense scrolling clouds. The wood of a superb dark-brown color.

Condition: Good condition, commensurate with age. Some wear, encrustations, minor signs of erosion and few smoothened chips along the edges. Fine, naturally grown patina overall. The box in excellent condition with minor surface wear.
Provenance: From a Canadian private collection.

Weight: 82 g (the jades), 1 kg (incl. the box)
Dimensions: Height of each jade c. 9.3 cm, size of the box 25 x 14.5 x 8 cm

AUCTION COMPARISON

Type: Related
Auction: Zucke, 27 January 2022, lot 241
Price: EUR 8,216
Description: A well-detailed carving of a dragon and a phoenix in pale green jade, Eastern Zhou Dynasty
Expert remark: Compare the related form and subject. Note the smaller size (7.5 cm). Also note that this result is for a single jade only.



Purchase for EUR 5,200



31 | **A GRAY JADE 'TIGER' PENDANT, SPRING AND AUTUMN PERIOD**

Jade. China, Eastern Zhou dynasty, Spring and Autumn period, 6th – 5th century BC

Of flattened form, carved as a crouching tiger in profile with curled tail and abstracted head, the body decorated with C-shaped scrolls, the tail, head, and upper body pierced with small apertures. The semi-translucent stone of a gray tone with white alterations.

Condition: Very good condition commensurate with age, with old wear and signs of weathering.
Provenance: Collection of Stephen Poulin, Toronto. Mr. Poulin is an avid collector of archaic jades for 40 years and a renown professional in the art conservation industry.

Weight: 15 g
Dimensions: Length 8.2 cm

Literature comparison: See two related dragon pendants, included in Teng Shuping, One Hundred Jades from the Lantien Shanfang Collection, Taipei, 1995, pl. 54. Another related pendant was unearthed in 1992 at Yimencun, Baoji, Shaanxi Province, illustrated by Liu Yunhui, Shaanxi chutu dongzhou yuqi (Eastern Zhou Jades Unearthed in Shaanxi), Beijing, 2006, p. 159.

AUCTION COMPARISON

Type: Related
Auction: Christie's New York in The Collection of Robert Hatfield Ellsworth Part III on 19 March 2015, lot 580
Price: USD 40,000
Description: A white jade 'tiger' pendant, late spring and autumn period, 6th-5th century BC
Expert remark: Compare the related form, decoration and size.



Purchase for EUR 3,900



32 | A LARGE CELADON JADE
'DRAGON AND PHOENIX' PENDANT,
EASTERN ZHOU

China, Eastern Zhou dynasty, 5th-3rd century BC

The stone carved as a sinuous dragon, depicted with a pointed laid-back horn and snout-like nose, the compact S-shaped body interlinking with a long-crested phoenix, terminating with its head carved on the other end. The translucent stone of a pale celadon tone with black speckles, a russet area at the dragon's head and few white areas of calcification. Pierced at the top to allow suspension as a pendant.

Condition: Good condition commensurate with age, with wear, weathering, and small smoothened chips.
Provenance: Collection of Stephen Poulin, Toronto. Mr. Poulin is an avid collector of archaic jades for 40 years and a renown professional in the art conservation industry.

Weight: 91 g
Dimensions: Length 17.5 cm

Purchase for EUR 5,200



33 | A SMALL PALE CELADON
JADE 'DRAGON' PENDANT,
EASTERN ZHOU

China, Eastern Zhou dynasty,
5th-3rd century BC

Finely carved as a sinuously coiled dragon, the body neatly incised with fine lines and a double line following the curves, the face detailed with a slit mouth. The polished translucent stone of a slight yellowish celadon tone with minor cloudy white inclusions. Pierced to the top allowing for suspension as a pendant.

Condition: Good condition commensurate with age, with old wear, signs of weathering, and few smoothened chips to exposed areas. The stone with natural fissures.
Provenance: Collection of Stephen Poulin, Toronto. Mr. Poulin is an avid collector of archaic jades for 40 years and a renown professional in the art conservation industry.

Weight: 10 g
Dimensions: Length 5.5 cm

Purchase for EUR 2,600



34 | A SMALL JADE
'DRAGON' PENDANT,
EASTERN ZHOU

China, Eastern Zhou dynasty,
5th-3rd century BC

Finely carved as a stylized dragon forming an arch, with incised eyes and barbels as well as a pierced mouth, the body neatly carved in relief with scrollwork. The translucent stone of a yellowish-green tone with buff calcification, with a remarkably unctuous feel overall.

Condition: Very good condition, with old wear and weathering, the chin with a chip which has smoothened over the centuries.
Provenance: Collection of Stephen Poulin, Toronto. Mr. Poulin is an avid collector of archaic jades for 40 years and a renown professional in the art conservation industry.

Weight: 18 g
Dimensions: Length 6.5 cm

Purchase for EUR 2,600



35 | A SUPERB PALE CELADON JADE OPENWORK
'SNAKES AND DRAGON' PENDANT,
EASTERN ZHOU

China, Eastern Zhou dynasty, 5th – 4th century BC

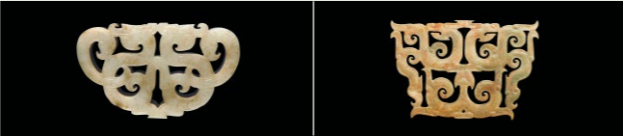
The openwork pendant showcases an arrangement of archaic beasts such as dragons, held together as a composition by a two-headed serpent. The highly polished and lustrous surface of the translucent stone of even pale celadon color perfectly balances the grooved patterns.

Condition: Very good condition with expected traces of weathering and wear as well as natural inclusions and fissures to the stone.
Provenance: Canadian private collection.

Weight: 19 g
Dimensions: Length 7.3 cm

LITERATURE COMPARISON

Compare to closely related openwork pendants in 4000 Years of Chinese Archaic Jades, by Prof. Filippo Salviati, Nos. 214, 217, pages 200-205.



Purchase for EUR 5,200



36 | A JADE 'PHOENIX' PENDANT, XI,
EASTERN ZHOU

China, Eastern Zhou dynasty, Warring States period, 5th-3rd century BC

This curved pendant, xi, is also referred to as a 'knot opener' or 'claw-shaped pendant'. Of flattened, arched, and tapering form, finely carved in openwork as a long-crested phoenix, the lower segment neatly filled with tight, parallel lines. The polished translucent stone of a slight yellowish celadon tone with cloudy white inclusions.

Condition: Very good condition, with old wear and nibbles which have smoothened over the centuries.
Provenance: Collection of Stephen Poulin, Toronto. Mr. Poulin is an avid collector of archaic jades for 40 years and a renown professional in the art conservation industry.

Weight: 6 g
Dimensions: Length 9.3 cm

Purchase for EUR 2,600

37 | A GREEN AND RUSSET JADE
'DRAGON AND PHOENIX' PENDANT,
EASTERN ZHOU

China, Eastern Zhou Dynasty, 5th-3rd century BC

Finely carved as a curved dragon, with incised eyes, snout-like nose and open mouth, the body neatly carved with comma-spirals (guwen), above a stylized phoenix in openwork. The opaque stone of a rich russet tone to one side and of olive-green color with creamy inclusions to the other.

Condition: Excellent condition with minor wear and minimal smoothened nibbling.
Provenance: From a Swedish private collection, acquired in Stockholm in 2005.

Weight: 17 g
Dimensions: Length 7 cm

Purchase for EUR 3,250



38 | A LARGE SEA-GREEN JADE
'DRAGON AND PHOENIX' PENDANT,
WARRING STATES

China, Eastern Zhou dynasty, Warring States period (c. 475-221 BC)

Carved in the form of a dragon in profile with two phoenix heads emerging from its arched, s-shaped body, each side decorated with elevated comma spirals. The translucent stone of a sea-green tone with minor reddish-buff alterations, the surface shows a fine polish.



For an ancient drawing of a silhouette pendant related to the present lot, see Wu Dacheng, Gu Yu Tu Kao (Investigations into Ancient Jades with Illustrations), 1889, Shanghai

Condition: Very good condition commensurate with age, with old wear, signs of weathering, and very few smoothened nicks along the edges.
Provenance: Collection of Stephen Poulin, Toronto. Mr. Poulin is an avid collector of archaic jades for 40 years and a renown professional in the art conservation industry.

Weight: 58 g
Dimensions: Length 16 cm

LITERATURE COMPARISON
Compare a closely related but significantly smaller (9 cm) jade dragon pendant, dated 4th century BC, in the collection of the Victoria and Albert Museum, accession number FE.49-1996.



AUCTION COMPARISON
Type: Closely related
Auction: Zacke, Fine Chinese Art, Buddhism & Hinduism on 15 October 2021, lot 68
Price: EUR 7,584
Description: An altered celadon jade 'dragon and phoenix' silhouette pendant, Warring States
Expert remark: Compare the closely related form and decoration.



Purchase for EUR 5,200



39 | **A LARGE PAIR OF GREEN
'DOUBLE DRAGON' JADE PENDANTS,
EASTERN ZHOU**

China, Eastern Zhou dynasty, 4th-3rd century BC

Each elegantly curved huang with a stylized dragon head to either end, the surface densely covered with small and slightly raised hexagons, a pattern called pu, or 'cat tail'. The squarish indentations carved on the border at the extremities of the ornaments evoke the stylized features of two dragon heads in profile: the chin, mouth, snout, and horns. The mostly translucent stone of a sea-green tone with areas of white calcification. Pierced for suspension.

Both pendants in velvet fitted silk storage boxes.

Condition: Good condition, commensurate with age. Some wear, encrustations, minor signs of erosion and few smoothened nicks along the edges. Fine, naturally grown patina overall.
Provenance: From a Canadian private collection.

Weight: 277 g and 286 g
Dimensions: Length c. 37.5 cm each

LITERATURE COMPARISON

Three related huang carved with patterns of small, raised curls and hexagons were excavated from the princely tombs at Shizishan (Xuzhou, Jiangsu) between 1994 and 1995. Similar huang with jagged profiles but decorated with spirals and dated to the late Eastern Zhou period, are in the National Museum of History, Taiwan, and in the Samuel and Myrna Myers collection. Compare also with a very similar, yet significantly smaller pair in F. Salviati, 4000 Years of Chinese Archaic Jades, Edition Zacke, Vienna 2017, no. 285.

AUCTION COMPARISON

Type: Related
Auction: Christie's New York in THE FALK COLLECTION I: Fine Chinese Ceramics & Works of Art on 16 October 2001, lot 209
Price: USD 15,275 at the time.
Description: A Pale Greenish-White Jade Huang, Eastern Zhou dynasty
Expert remark: Compare the related form and subject. Note the smaller size (14 cm).

Purchase for EUR 6,500

40 | **A PAIR OF GRAY JADE
'DOUBLE DRAGON' PENDANTS, HUANG,
EASTERN ZHOU**

China, Eastern Zhou dynasty, 5th-3rd century BC

Each of arched form and finely carved on either side with C-shaped scrolls, terminating with a pair of dragon heads showing curved snouts and pointed ears, the open jaws exposing fangs and curled beards. The semi-translucent gray stones with opaque creamy-white alteration.

Condition: Very good condition commensurate with age, with old wear, signs of weathering, and nibbles which have smoothened over the centuries.
Provenance: Collection of Stephen Poulin, Toronto. Mr. Poulin is an avid collector of archaic jades for 40 years and a renown professional in the art conservation industry.

Weight: 18 g
Dimensions: Length c. 7.7 cm each

Purchase for EUR 2,600



41 | **A SUPERB RUSSET JADE DRAGON-FORM PENDANT, EASTERN ZHOU**

China, Eastern Zhou dynasty, late Warring States period, c. 300-221 BC

A very rare and finely carved pendant with a single-horned dragon in profile. Beautifully executed, the s-shaped body is decorated with ruyi motifs, various scrolling patterns and geometrical design to both sides. The pendant is masterfully polished and lustrous, carved from translucent jade of ochre to russet hues.

Condition: Very good condition with expected traces of weathering and wear as well as natural inclusions and fissures to the stone.
Provenance: Canadian private collection.

Weight: 34 g
Dimensions: Height 7.5 cm

Purchase for EUR 6,500



42 | **A FINE WHITE AND RUSSET JADE 'TIGER' PENDANT, SPRING AND AUTUMN**

China, Eastern Zhou dynasty, Spring and Autumn period, c. 6th- 5th century BC

An impressive jade depicting a crouching tiger in profile. Its head with spout-like nose is turned to the left, the short tail is coiled, and the paws tucked in. The front side is entirely covered with a dense pattern of fat comma spirals in relief. The backside of the pendant is plain and nicely polished. The stone is semi-translucent with a band of white jade running through the lower part of the tiger, whilst its back and head are of a russet hue.

The shape of the ornament is derived from similar, earlier late Western Zhou jades excavated from the royal tombs at the Tianma-Qucun cemetery, Shanxi province. However, the decoration is rendered in a significantly different manner as the motifs are carved in relief, not engraved, as in the previous Western Zhou tradition.

Condition: Very good condition with expected traces of weathering, small chips, and wear as well as natural inclusions and fissures to the stone.
Provenance: Canadian private collection.

Weight: 34 g
Dimensions: Length 8 cm

Purchase for EUR 5,200



43 | **A MOTTLED CELADON AND RUSSET JADE
OPENWORK PENDANT, EASTERN ZHOU**

China, Eastern Zhou dynasty, 4th-3rd century BC

Enclosed within a slightly trapezoidal shape is a central motif of two intertwined dragons facing each other. Their bodies are intricately coiled in geometric spirals and adorned with delicately braided motifs of double spirals, intersecting fine lines and ornamental patterns. The pendant is nearly perfectly symmetrical and exquisitely polished. The semi-translucent stone with dominant darker brown and russet hues, interspersed with some areas of pale-celadon green.

Condition: Very good condition with expected traces of weathering and wear as well as natural inclusions and fissures to the stone. One small chip to the lower left, which perfectly smoothened over time.

Provenance: Canadian private collection.

Weight: 31 g
Dimensions: Length 6.4 cm

Purchase for EUR 5,200



44 | **A VERY RARE CELADON AND RUSSET JADE
OPENWORK 'DRAGON AND PHOENIX' PENDANT,
WARRING STATES**

China, Eastern Zhou dynasty, late Warring States period to Early Western Han Dynasty, c. 300-141 BC

The pendant is intricately carved and pierced in symmetry as two single-horned coiled dragons with backward-turned heads and tails transforming into phoenix, joined at their backs with incised double-line scroll motifs on their bodies. The semi-translucent stone is of an even pale celadon tone with russet inclusions and smaller areas of alterations.

Condition: Very good condition with expected traces of weathering and wear as well as natural inclusions, alterations, and fissures to the stone.
Provenance: Canadian private collection.

Weight: 22 g
Dimensions: Length 7.3 cm

Purchase for EUR 5,200



45 | **A RARE PALE CELADON AND RUSSET JADE COMB,
SPRING AND AUTUMN**

China, Eastern Zhou, Spring and Autumn period (770-481 BC)

The comb of a slightly tapered, and rounded rectangular form, comprises 18 regular, and nicely carved teeth. Decorated with neatly incised design of scrolling clouds centered by a lozenge-shaped star framed by a rope border. The translucent stone is of a pale celadon tone with cloudy russet inclusions as well as some milky white areas.

Condition: Very good condition with expected traces of weathering and wear as well as natural inclusions, alterations, and fissures to the stone.
Provenance: Canadian private collection.

Weight: 57 g
Dimensions: Height 8.5 cm

This comb compares very favorably to one discovered in the 5th-century BC tomb of Marquis Yi of the Zeng state at Suixian and now in the collection of the Hubei Provincial Museum. The comb was put underneath the marquis' head. It is of closely related form and similarly carved to the present comb with cloud patterns and a lozenge-shaped star.

Purchase for EUR 3,900

46 | **A RARE CELADON AND RUSSET OPENWORK
JADE ORNAMENT WITH DRAGON AND PHOENIX,
EASTERN ZHOU**

China, Eastern Zhou dynasty, c. 5th-3rd century BC

A beautiful ornament with a rectangular frame in openwork, adorned with geometrical motifs, and flanked by powerful depictions of a dragon and a phoenix, also in openwork. The s-shaped bodies of the mythical beasts are vivid, they twist gracefully in undulating lines, while their mouths are wide open. The dragon appears to stride proudly, with its head turned backward, while the phoenix appears like a mythical guardian. The entire surface is perfectly polished, decorated with thin groove lines and with further elegant, geometrical motifs. The jade is of a semi-translucent quality and beautifully transitions from a pale celadon shade to a russet hue, gradually deepening to a dark brown.

Condition: Very good condition with expected traces of weathering, tiny notches, and wear as well as natural inclusions and fissures to the stone.
Provenance: Canadian private collection.

Weight: 36 g
Dimensions: Length 9.1 cm

Purchase for EUR 7,800





47 | **A SEA-GREEN JADE DISC RING, HUAN, EASTERN ZHOU**

China, Eastern Zhou dynasty, 5th-3rd century BC

Of circular form, neatly carved to both sides with C-shaped scrolls. The semitranslucent stone is of sea-green tone with extensive surface encrustations.

Condition: Good condition, with old wear, weathering, erosion, and small nicks which have smoothened over the centuries. With areas of malachite and cuprite patina.
Provenance: Collection of Stephen Poulin, Toronto. Mr. Poulin is an avid collector of archaic jades for 40 years and a renown professional in the art conservation industry.

Weight: 32 g
Dimensions: Diameter 7.5 cm

LITERATURE COMPARISON
For a related jade disc showing similar scroll decoration, also dated to the Eastern Zhou, see the British Museum, registration number 2022,3034.157.



Purchase for EUR 2,600

48 | **A MOTTLED CELADON JADE BI DISC, WARRING STATES**

China, Eastern Zhou dynasty, Warring States period, circa 400-300 BC



Carved to both sides with raised bosses in the form of comma spirals enclosing the central aperture within narrow raised borders. The semi-translucent stone of a pale celadon tone with areas of darker inclusions which creates an appealing contrasting effect.

Condition: Very good condition with expected traces of weathering and wear as well as natural inclusions, and alterations to the stone.
Provenance: Canadian private collection.

Weight: 23 g
Dimensions: Diameter 4.7 cm

LITERATURE COMPARISON
Compare to closely related discs in 4000 Years of Chinese Archaic Jades, by Prof. Filippo Salviati, Edition Zacke, Nos. 227, 228, pages 215-217.



AUCTION COMPARISON
Type: Related
Price: Sold at 250,000 HKD, approx. **29,000 EUR**
Auction: Christie's, The Chang Wei-Hwa Collection of Archaic Jades Part III – Spring and Autumn & Warring States Periods, 3rd of December 2021, Lot 2728
Description: A pale celadon and russet jade disc, BI



Purchase for EUR 2,600

49 | **A PALE CELADON JADE 'DOUBLE DRAGON' PENDANT, HAN DYNASTY**

China, late Eastern Zhou to Western Han, 3rd-1st century BC

The open-ended circular pendant finely carved with c-shaped scroll, terminating with a pair of dragon heads with curved snouts and pierced mouths. The highly polished, translucent stone of a near-white, pale celadon tone with faint cloudy inclusions.

With a fitted silk storage box.

Condition: Very good condition with expected age-related wear and weathering as well as tiny nibbles.
Provenance: Swedish private collection, acquired in Stockholm in 2005.

Weight: 59 g (excl. the box)
Dimensions: Diameter 10.5 cm

Purchase for EUR 6,500





50 | AN ALTERED JADE RING, HUAN, HAN DYNASTY

China, Han dynasty (202 BC -220 AD)

The semi-translucent ring chiseled from pale celadon jade with extensive patches of ivory -white and brown, and with some darker inclusions. Large, circular inner aperture with slightly raised edges which nicely corresponds to the slightly raised outer rim.

Condition: Very good condition with expected traces of weathering, alterations, and wear as well as natural inclusions, tiny chips, and fissures to the stone.
Provenance: Canadian private collection.

Weight: 22 g
Dimensions: Diameter 6.5 cm

Purchase for EUR 2,600



51 | A JADE PENDANT OF A DANCER, HAN DYNASTY

China, Han dynasty, 2nd century BC to 2nd century AD

The slender dancer is carved in openwork, wearing a robe with long sleeves, the right arm raised above the head, the left bifurcated and curling, the face and details of the robe finely incised. The translucent stone of a pale gray tone with areas of creamy-white calcification.

Condition: Good condition commensurate with age, with old wear and signs of weathering. The stone with natural imperfections.

Provenance: Collection of Stephen Poulin, Toronto. Mr. Poulin is an avid collector of archaic jades for 40 years and a renown professional in the art conservation industry.

Weight: 16 g
Dimensions: Height 6 cm

LITERATURE COMPARISON

For a similar jade plaque of a dancer depicted in the same position, see the British Museum, Registration number 1947,0712.492.



Purchase for EUR 2,600



52 | A POWERFUL JADE OPENWORK TIGER PENDANT, HAN DYNASTY

China, Han Dynasty (202 BC -220 AD)

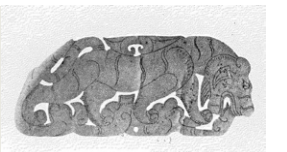
A very fine openwork pendant depicting a tiger with his prey in profile, grooved lines carved on the body suggest the fur. The beautiful semi-translucent, olive-green, and russet jade turns to a black color near the edges which also show calcified areas of grey-beige color.

Condition: Very good condition with expected traces of weathering and wear as well as natural inclusions, small notches, and fissures to the stone.
Provenance: Canadian private collection.

Weight: 20 g
Dimensions: 6.7 cm

LITERATURE COMPARISON

Compare to: Fig.2, Tiger in white jade, Plate XXI, Early Chinese Jades by Una Pope- Hennessy, London, 1923. This pendant is also similar to a famous carving in the Musée national des arts asiatiques – Guimet (accession number MG 18437), in Paris, that was originally part of the collection of archaic jades of Dr. G. Gieseler (d. 1933), one of the earliest to be formed in the Western world at the beginning of the 20th century. The jade is reproduced in A. Salmony, Carved jade of ancient China, 1982 reprint, London, pl. 67 no. 1, and in J. P. Desroches, Asie Extrême. Chine, Corée, Japon, Vietnam, Paris 1993, pl. 9.



Purchase for EUR 5,200

53 | **AN IMPORTANT CELADON AND
RUSSET JADE WASHER WITH PHOENIX HANDLES,
WESTERN HAN**

China, Western Han dynasty, 2nd- 1st century BC

This Western Han masterpiece exhibits an elegant and well-proportioned form, with a surface that has been meticulously polished. On both sides, symmetrically flanking the washer, there are handles in the form of profiled phoenixes that have been intricately carved with great attention to detail. The bodies of these mythical beasts are adorned with delicate incised lines, adding depth and texture to the overall design. The rounded sides of the washer rise gracefully and are embellished with stylized incised decorations depicting intertwined chi dragons and phoenixes. On the bottom are additional incised lines featuring stylized zoomorphic and floral motifs.

The stone is of a semi-translucent quality with a wide range of celadon and russet hues as well as opaque ochre-colored inclusions.

Condition: Very good condition with some minor signs of age-related weathering, natural fissures and alterations.

Provenance: Private collection of Prof. Filippo Salviati.

Weight: 165 g

Dimensions: Length 14 cm, Diameter (without handles 9.2 cm), Height 2.3 cm

LITERATURE COMPARISON

Compare to a closely related dragon pendant in The complete Collection of Treasures of the Palace Museum, Vol. 40, 1995, Hong Kong, Lot 223, page 268.



Purchase for EUR 36,400



54 | **AN IMPORTANT AND LARGE WHITE AND
RUSSET JADE 'DOUBLE DRAGON' BELT HOOK,
WESTERN HAN**

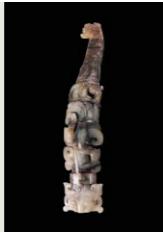
China, Western Han Dynasty, 2nd – 1st century BC

The curved shaft is composed of seven pieces of white and russet jade and finely carved and incised with scrolls, scales, and thin lines, terminating on each side with a beast head, one end carved as a chilong, forming the hook, the other carved as a horned dragon with agape mouth revealing fangs and tongue. The polished, translucent stone is of a mesmerizing white color with faint russet shades and dark inclusions. The concave underside set with a circular knob.

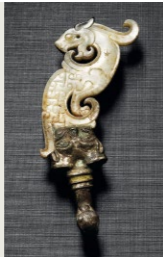
Condition: Excellent condition with expected age-related wear and weathering as well as natural inclusions and small fissures.
Provenance: German private collection.

Weight: 298 g
Dimensions: Length 25.5 cm

LITERATURE COMPARISON
A similar jade belt hook from the Western Han dynasty, kept in the Museum of the Western Han Mausoleum of king of Nanyue, is illustrated in The complete collection of jades unearthed in China, by Gu Fang, Volume 11, Guangdong, Guangxi, Fujian, Hainan, Hong Kong, Macao, Taiwan, Science Press, Beijing, 2010, page 132.



AUCTION COMPARISON
Type: Related
Auction: Christie's, Chinese Archaic Jades from The Yangdetang Collection Part II, 28th of November 2018, Lot 2765.
Price: 1,500,000 HKD, approx. **177,000 EUR**
Description: A White Jade 'Dragon' Belt Hook, Early Western Han Dynasty, circa 206-141 BC
Expert's note: please kindly note, that the jade is attached to one end with a bronze fixture.



Purchase for EUR 39,000





55 | **A PALE CELADON AND RUSSET OPENWORK JADE
DRAGON PENDANT, WESTERN HAN**

China, Western Han dynasty, 2nd- 1st century BC

The plaque features a rectangular frame with an intricate openwork representation of a Chi dragon within. Delicate incised lines embellish the body of the mythical creature. The decoration is applied solely on the front side. The jade used for this plaque displays a pleasant pale celadon hue, with darker inclusions at the rims primarily.

Condition: Good condition with signs of age-related weathering, encrustation, nibbles and natural inclusions.
Provenance: Private collection of Prof. Filippo Salviati.

Weight: 44 g
Dimensions: Length 9.6 cm

Purchase for EUR 7,800



56 | **A FINE PALE CELADON AND
RUSSET JADE ARCHER'S RING PENDANT,
HAN DYNASTY**

China, Han dynasty (202 BC -220 AD)

This elaborately carved archer's ring pendant has a central opening for the thumb and is adorned with masterfully carved openwork decoration depicting a chilong dragon and a phoenix. The surface of the pendant is enriched with carefully incised patterns. The translucent pale celadon stone with delicate, russet inclusions and some small, altered areas is polished to a high shine and very smooth to the touch.

Condition: Very good condition with expected traces of weathering and wear as well as natural inclusions and alterations to the stone.
Provenance: Canadian private collection.

Weight: 28 g
Dimensions: Height 7.2 cm, Length 6.1 cm

Purchase for EUR 9,100

LITERATURE COMPARISON
Compare to closely related archer's ring pendants in 4000 Years of Chinese Archaic Jades, by Prof. Filippo Salviati, Nos. 325, 326, pages 322-323. Compare to a closely related archer's ring pendants in The Complete Collection of Treasures of the Palace Museum, Hong Kong 1995, Lot 188, page 227.



Purchase for EUR 9,100



57 | **A CELADON JADE DISC WITH COILED DRAGONS, WESTERN HAN DYNASTY**

China, Western Han dynasty, c. 2nd - 1st century BC

A very fine celadon jade disc with high relief decoration of two coiled dragons. The reverse is decorated with a pattern of comma spirals in high relief. The fine celadon stone with russet and sparse cloudy inclusions. The carving is neatly executed, and the surface is well polished.

Condition: Very good condition with natural weathering, alterations as well as calcification to the edges, and some minuscule chips.
Provenance: Canadian private collection.

Weight: 105 g
Dimensions: Diameter 8.7 cm

LITERATURE COMPARISON
Compare to: Fig.2, Disc carved in high relief with hydra and gong, Plate XXX, Early Chinese Jades by Una Pope-Hennessy, London, 1923.

Purchase for EUR 7,800



58 | **A CELADON AND BROWN CHI DRAGON JADE SWORD CHAPE, HAN DYNASTY**

China, Han dynasty (202 BC-220 AD)

Of compressed trapezoidal shape with gracefully arched upper edge. Both sides are beautifully adorned with the motif of two Chi dragons, with the head of one dragon protruding above the upper edge. The bodies of the dragons are sinuous and perfectly arranged. The base is pierced with one deep hole between two smaller ones. The stone is semi translucent, and of a celadon hue with russet inclusions to the one side, while the other side is dark brown with some nice russet and reddish spots.

As art historian, Alain R. Truong, points out that with its connotations of magical protective powers, jade was a particularly appropriate material for weaponry fittings. It was believed to enhance the material strength and force of both the weapon and its wielder. During the Western Han dynasty, jade sword fittings with three-dimensional chi dragon were particularly popular. See J. Rawson, Chinese Jade from the Neolithic to the Qing, London, 1996, p.294.

Condition: Very good condition with expected traces of weathering and wear as well as natural inclusions to the stone.
Provenance: Canadian private collection.

Weight: 48 g
Dimensions: Length 5.2 cm

AUCTION COMPARISON
Type: Related
Price: Sold at 1,600,000 HKD, approx. **189,000 EUR**
Auction: Bonhams, The Sze Tang Collection of Chinese Jades, 5th of April 2016, Lot 15.
Description: A pale green jade "chi" dragon sword chape, bi



Purchase for EUR 5,850